

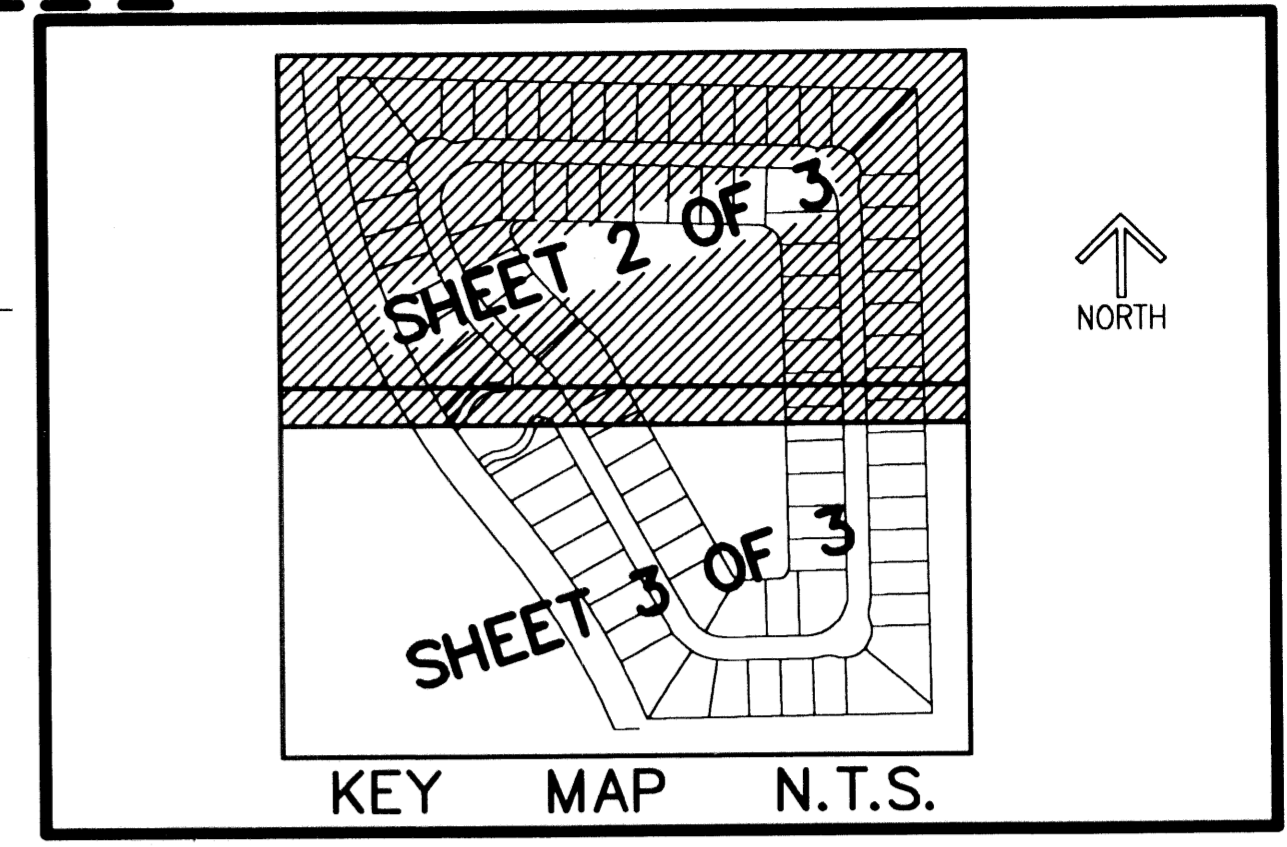
# DIAMOND "C" RANCH POD G REPLAT

A PLANNED UNIT DEVELOPMENT BEING A PART OF DIAMOND "C" RANCH PUD, BEING A REPLAT OF POD G, DIAMOND "C" RANCH, AS RECORDED IN PLAT BOOK 99, PAGES 173 THROUGH 179 OF THE PUBLIC RECORDS OF PALM BEACH COUNTY, FLORIDA LYING IN SECTION 6, TOWNSHIP 44 SOUTH, RANGE 42 EAST, PALM BEACH COUNTY, FLORIDA

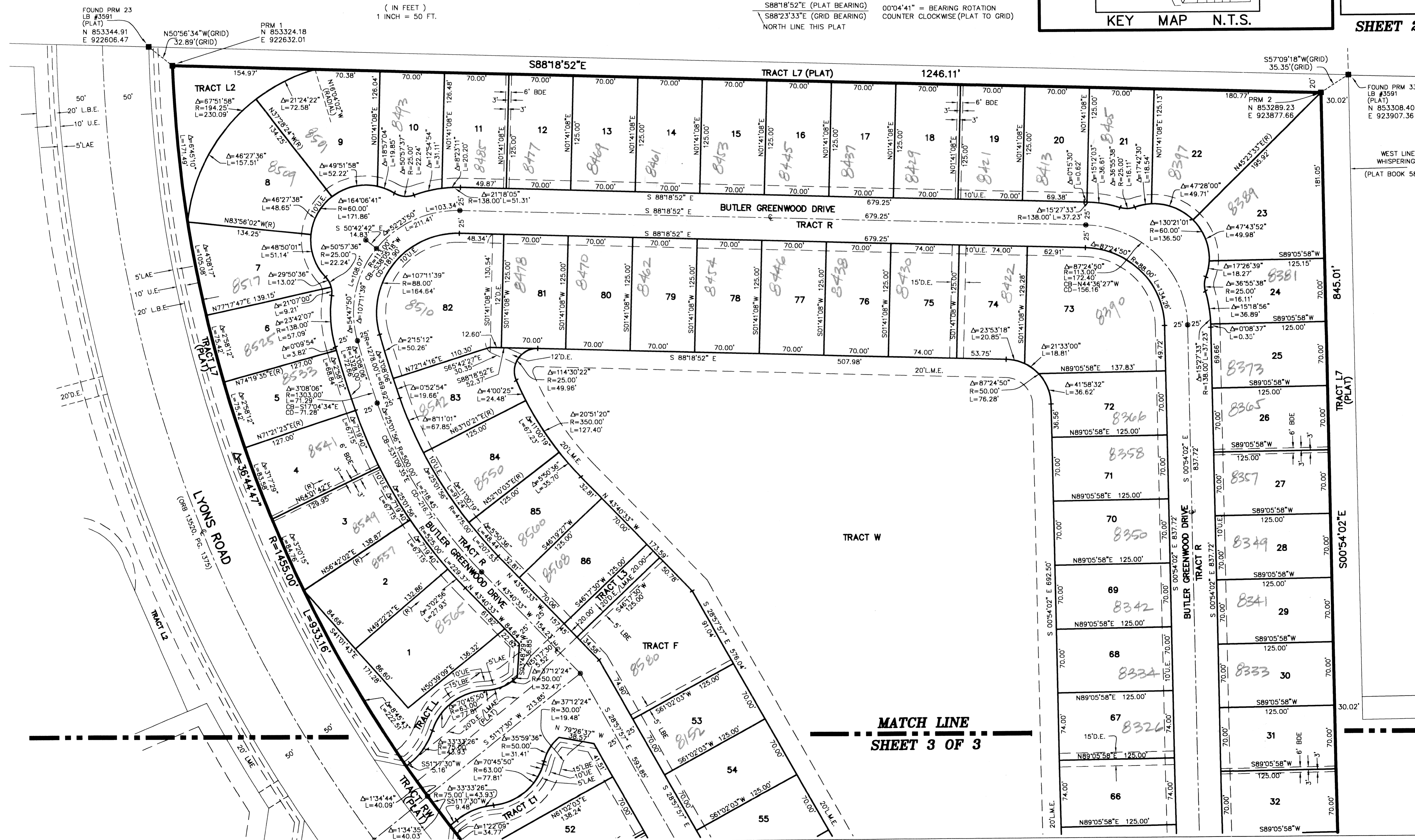
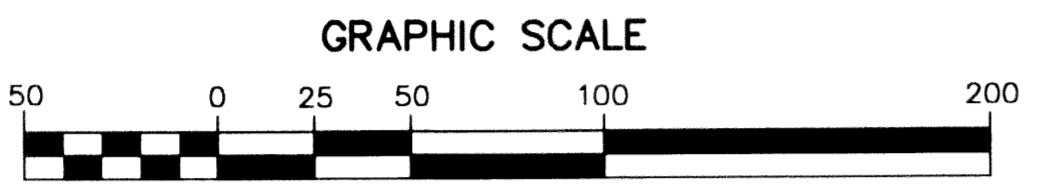
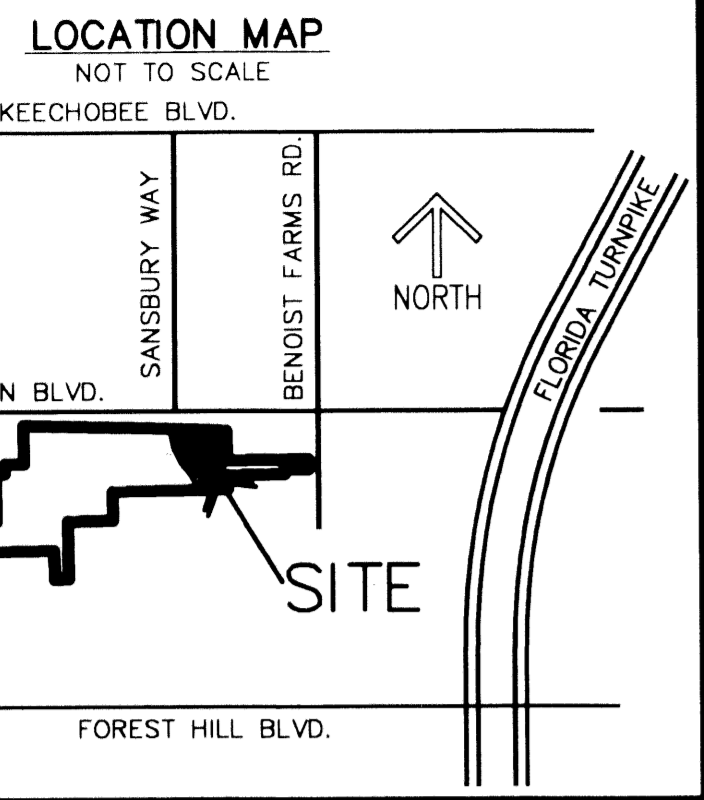
THIS INSTRUMENT PREPARED BY  
DAVID P. LINDLEY  
OF  
**CAULFIELD AND WHEELER, INC.**  
SURVEYORS - ENGINEERS - PLANNERS  
7301-A WEST PALMETTO PARK ROAD, SUITE 100A  
BOCA RATON, FLORIDA 33433 - (561)392-1991  
OCTOBER - 2002

## NOTES COORDINATES, BEARINGS AND DISTANCES

COORDINATES SHOWN ARE GRID  
DATUM = NAD 83 1990 ADJUSTMENT  
ZONE = FLORIDA EAST  
LINEAR UNIT = US SURVEY FEET  
COORDINATE SYSTEM 1983 STATE PLANE  
TRANSVERSE MERCATOR PROJECTION  
ALL DISTANCES ARE GROUND  
SCALE FACTOR = 1.00002175  
GROUND DISTANCE X SCALE FACTOR = GRID DISTANCE  
BEARINGS AS SHOWN HEREON ARE GRID DATUM, NAD 83 1990  
ADJUSTMENT, FLORIDA EAST ZONE.  
S88°18'52"E (PLAT BEARING) 00°04'41" = BEARING ROTATION  
S88°23'33"E (GRID BEARING) COUNTER CLOCKWISE (PLAT TO GRID)  
NORTH LINE THIS PLAT



STATE OF FLORIDA  
COUNTY OF PALM BEACH  
THIS PLAT WAS FILED FOR  
RECORD AT  
THIS \_\_\_\_\_ DAY OF \_\_\_\_\_  
A.D. 2004 AND DULY  
IN PLAT BOOK \_\_\_\_\_  
PAGES \_\_\_\_\_ AND \_\_\_\_\_  
DOROTHY H. WILKEN  
CLERK CIRCUIT COURT  
BY: \_\_\_\_\_  
DEPUTY CLERK



MATCH LINE  
SHEET 3 OF 3

FOUND PRM 33  
LB #3591  
(PLAT)  
N 853308.40  
E 923907.36

WEST LINE OF  
WHISPERING OAKS  
(PLAT BOOK 58, PAGE 14)

FOUND PRM 23  
LB #3591  
(PLAT)  
N 853344.91  
E 922606.47

PRM 1  
N 853324.18  
E 922632.01

S57°09'18"W (GRID)  
35.35' (GRID)

PRM 2  
N 853289.23  
E 923877.66

S89°05'58"W  
125.15'

S89°05'58"W  
125.00'

S89°05'58"W  
125.00'

S89°05'58"W  
125.00'

S89°05'58"W  
125.00'

S89°05'58"W  
125.00'

S89°05'58"W  
125.00'

S89°05'58"W  
125.00'